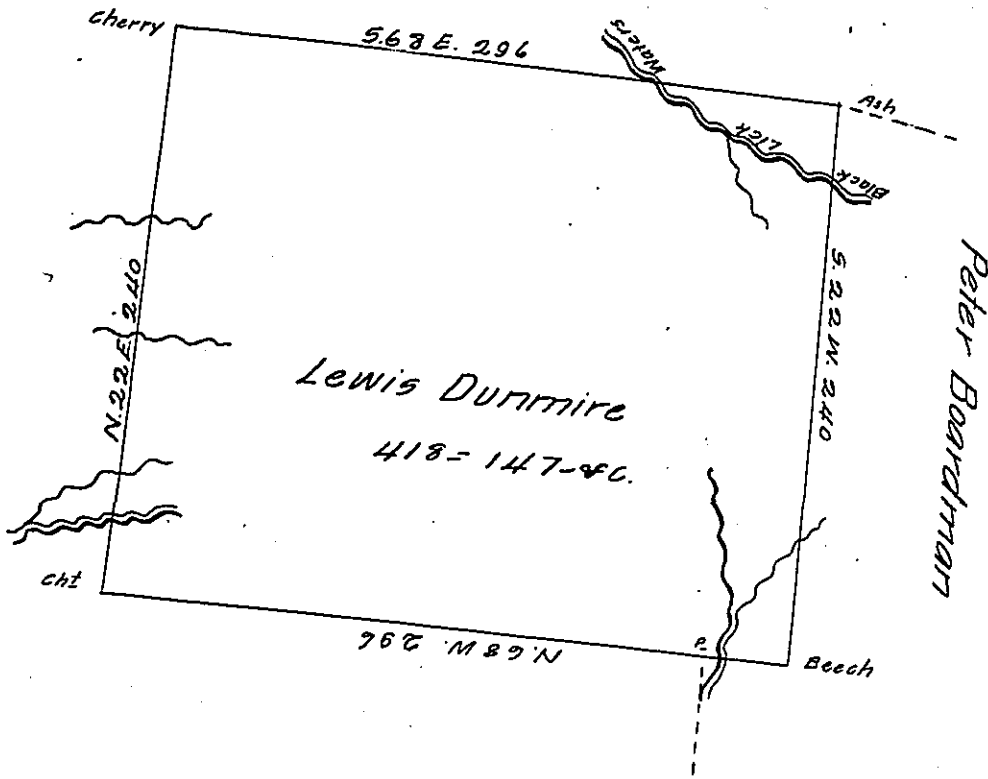


John Murray Esq



Situate on the dividing Ridge Between the waters of Blacklick
 & Conemaugh, - Jackson Township Cambria County. Surveyed on the
 26th day of March 1835 on a Warrant dated the 3rd day of Feby
 1835. Containing four hundred & eighteen acres & one hundred &
 forty seven ps. & allowance & c.

by W. O'Keeffe

To Jacob Spangler Esq }
 Surveyor General }

D.S.

IN TESTIMONY that the above is a copy of the original remaining on file in
 the Department of Internal Affairs of Pennsylvania, made
 conformably to an Act of Assembly approved the 16th day of
 February, 1833, I have hereunto set my Hand and caused
 the Seal of said Department to be affixed at Harrisburg,
 this fifth day of August 1904

Isaac D. Brown
 Secretary of Internal Affairs.